



MINLEY MANOR

Exclusive Venue

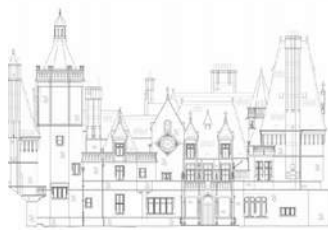
SURREY & HAMPSHIRE'S BEST KEPT SECRET

Weddings at Minley Manor

Unique ~ Unrivalled ~ Unforgettable



**STUNNING PRIVATE 83 ACRE COUNTRYSIDE ESTATE AND HISTORIC
EXCLUSIVE USE VENUE ON THE BORDER OF SURREY & HAMPSHIRE**



MINLEY MANOR



Welcome

Welcome to Minley Manor; a French chateaux styled Manor House, and one of North Hampshire and Surrey's most remarkable and best kept secrets. Our magnificent and unique grade II* listed privately owned estate benefits from 83 acres of extensive grounds and provides an idyllic backdrop for your wedding celebration with far-reaching vistas over the Hampshire countryside.

Exclusively yours, our dry hire venue offers you the option to create a totally bespoke occasion you and your guests will always remember. The perfect blank canvas retreat, providing you with complete privacy and the flexibility to design your day, your way.

We look forward to working with you on your wedding planning journey!

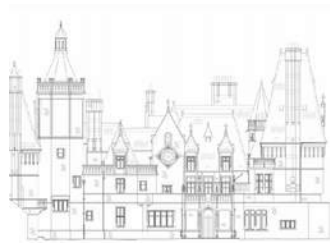
Suzanne & The Team



IMAGE CREDIT: ANTHONY YU



IMAGE CREDIT: MASHA UNWERTH



MINLEY MANOR

A peaceful and tranquil countryside location, yet just minutes from main transport links and only 35 miles from London

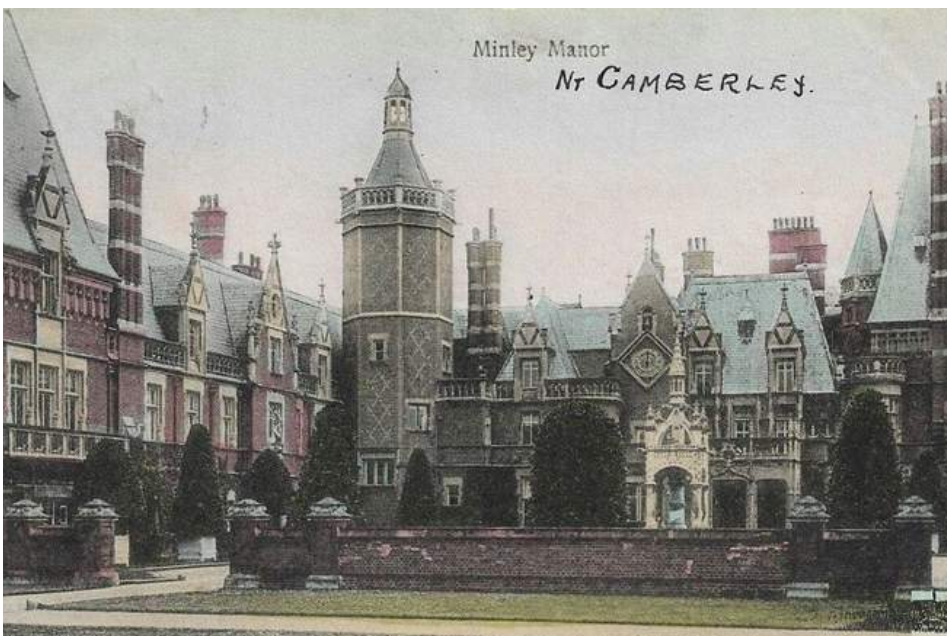


History

Raikes Currie, a wealthy banker, bought the estate for his family in the 1840's and replaced the old manor house in the late 1850's with one in the style of a French château, built by Henry Clutton. Also the birthplace of the British diplomat Sir Reginald Hoare in 1882, the Prime Minister, William Gladstone planted an oak tree within the gardens, in 1893 which stands to this day.

The estate was bought by the War Department in 1934 to be part of the Senior Staff College at Camberley.

Formerly home to the Royal Engineers, and now privately owned, the Manor is steeped in a long and fascinating history and has seen many notable visitors over the years, including various prime ministers, Queen Elizabeth II and The Duke of Edinburgh.



WEDDING CEREMONIES

and so the adventure begins...



IMAGE CREDIT: WEDDING STORIES

WONDERFULLY FLEXIBLE

At Minley Manor we are committed to excellence as a stunning flexible venue with many beautiful options for wedding ceremonies. We welcome couples who wish to create their own ceremony to then have greater flexibility over where it takes place. Hold your ceremony anywhere you can imagine!



IMAGE CREDIT: CARRIE LAVERS PHOTOGRAPHY

Al Fresco Ceremonies

We are the perfect outdoor ceremony venue, with a plethora of beautiful settings in which to say "I do", Our non-legal ceremonies are conducted by a fabulous team of award-winning celebrants



WELLINGTONIA AVENUE

Probably the most spectacular setting to hold your outdoor ceremony is our 480ft long avenue of giant Sequoias and Lime trees. Creating an tunnel for the eye with the Manor House as your backdrop. With no restrictions on numbers here, you can invite as many guests as you wish to witness your handfasting.



IMAGE CREDIT: BERTIES PHOTOGRAPHY

DUTCH WINTER GARDENS

Suitable for weddings from 30 to 130, the main gardens to the west of the Manor House, feature the sunken garden and fountain, and provide some incredible far-reaching countryside vistas. The seating possibilities are endless and The Cloisters provide ample shelter for guests come rain or shine.



IMAGE CREDIT: DACHUAN

WOODLAND GARDENS

Looking for a bohemian or whimsical style ceremony amongst the trees, our beautiful woodland gardens provide a peaceful and colourful backdrop any time of year.



IMAGE CREDIT: ANDY MAC PHOTOGRAPHY

Indoor Ceremonies

Giving you the flexibility of choice of setting with our celebrant ceremonies

THE ORANGERY

Suitable for ceremonies and receptions, The Orangery is over 30ft long with its stunning barrel-vaulted ceiling and large arched, south-facing windows which allow light and warmth to flood in.



IMAGE CREDIT: WEDDING STORIES



IMAGE CREDIT: NATALIE SYLVESTER PHOTOGRAPHY

Seating from 50 up to a maximum of 200 guests theatre style, with a central atrium and flagstone floor, the Orangery is an incredibly versatile blank canvas space to create various ceremony seating layouts.

Religious Ceremonies

*We are lucky enough to benefit from the beautifully quaint 150 year old church of St Andrews, nestled amongst the trees on the estate. Perfect for couples looking for a religious service or blessing *subject to qualifying conditions*



IMAGE CREDIT: ANTHONY YU

ST ANDREWS CHURCH

Dating back to 1871, St Andrews is a small chapel of flint and stone in a pretty gothic style with a fascinating history. Built by Raikes Currie in memory of his beloved wife, Laura Sophia, there are many tributes to her love of passionflowers carved into the panelled walls and featured in the stained glass windows alongside depictions of angels.

Reached by a private drive within the Minley Manor Estate, it is surrounded by mature trees in an idyllic setting. Seating up to a maximum of 60, it is perfect for more intimate weddings and within walking distance of the Manor House and gardens.

Usual parish rules apply so if you are living locally, or have lived in the parish previously, you or family members have connections with the church, either by being baptised or married at St Andrews then you may be able to have your ceremony at this beautiful church.

Couples should contact the Vicar of Hawley for qualifying guidelines, or speak to us should you be interested in a church blessing.



IMAGE CREDIT: ANTHONY YU

RECEPTIONS

a sweet ending to a new beginning



UNFORGETTABLY DISTINCTIVE

Couples can organise their own bespoke celebration with the freedom to choose each and every element themselves. No rules, no guests other than yours, and a host of award winning preferred suppliers to make your special day as unique and individual as you are.



Receptions in the Orangery

Our largest, most versatile blank canvas space, perfect for all occasions. Seating up to 200 guests, this light and airy room with flagstone floor and intricate high barrel-vaulted ceiling, enjoys an abundance of natural light and wonderful acoustics.

WEDDING BREAKFAST

Whether you envisage classically elegant, round tables with white linen, or a more relaxed banquet style seating with long trestle tables, the bare brick walls suit all styles of dining and provide a neutral backdrop to your theme or colour scheme.

You have the freedom to choose the furniture and chairs you would like, so you don't need to cover them! There are a variety of styles and your caterers can organise this for you.

EVENING RECEPTIONS

After the wedding breakfast you can dance the night away in the Orangery until midnight. You may want to provide some lounge furniture, bespoke bar and live music for entertainment.

We can help you envisage your ideas and suggest innovative ways to use the space effectively. Our experienced team of suppliers are on hand to create the perfect party.



IMAGE CREDIT: WEDDING STORIES



IMAGE CREDIT: PAOLA COLLEONI

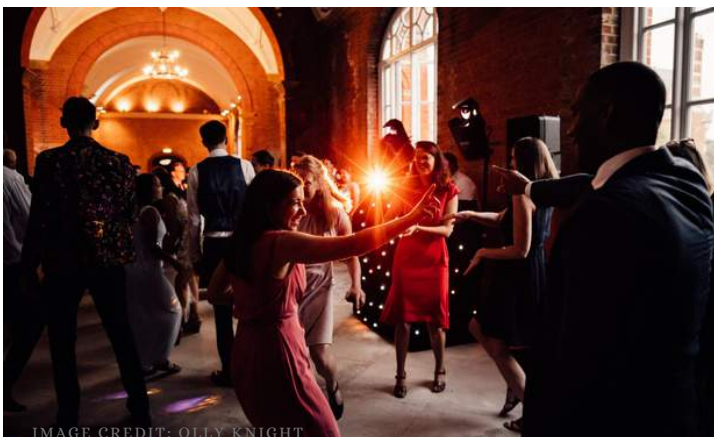


IMAGE CREDIT: OLLY KNIGHT



IMAGE CREDIT: CARRIE LAVERS

Open Air Receptions

What better way to entertain your guests; whilst enjoying the beautiful 83 acre surroundings, whether it be a quintessential garden party reception or a more relaxed festival style celebration



DUTCH WINTER GARDEN

Enjoying south facing views of the Hampshire countryside the walled lawns and gardens provide the perfect setting for your summer evening celebration. The two lawns either side of the path provide versatile areas for relaxing seating or lawn games. The Sunken Garden is perfect for your drinks reception while your guests are entertained, perhaps by a quartet or live band.



THE CLOISTERS

A beautifully designed covered walkway from the Manor House to the Orangery; ensuring our brides stay dry, The Cloisters provide a flexible additional space whilst ensuring shelter from the heat of the sun or inclement weather. Imagine adding some comfy seating overlooking the gardens, or perhaps long grazing tables where your guests can enjoy some canapes or hors d'oeuvres with their champagne.



SUNDIAL LAWN

Set back from the gardens with a view of the Manor House and South Terrace vistas, the Sundial lawn; surrounded by yew hedging provides an ideal further space to locate a marquee or stretch tent for a choice of dining or dancing environment from the Orangery. Deceptively large, this area can accommodate a marquee from 100 up to 300 guests (standing).



CREDIT: MASHA UNWERTH

VENUE HIRE PRICES

Some people look for a beautiful place, others make a place beautiful.



UNFORGETABLY UNIQUE

Built in an imposing French chateau style in the 1860s, our magnificent Manor house and grounds are a breath-taking setting for any type of event. Sat high on the hills overlooking Surrey and Hampshire, providing a totally unique space offering complete privacy and unrivalled flexibility.

Here Includes

- ~ Wedding Coordinator to provide advice on the day and months prior
- ~ Complete privacy of exclusive use for you and your guests
- ~ Grade II* Listed Historic Estate
- ~ 480m Wellingtonia Avenue of giant Sequoia trees
- ~ Spacious and versatile Orangery with south facing gardens
- ~ 83 acres of land including woodland and a thatched summerhouse
- ~ Award winning preferred Caterers with the flexibility to use your own
- ~ No corkage fees
- ~ Ideal location in the Hampshire countryside just 35 minutes from London
- ~ Unrivalled flexibility to create a truly unforgettable day



Venue Hire Prices

All prices shown are
inclusive of VAT

2023	Monday to Wednesday	Thursday	Friday	Saturday & Bank Holiday Sundays	Sunday
January	£4,500	£4,740	£5,400	£6,600	£6,300
February	£4,500	£4,740	£5,400	£6,600	£6,300
March	£4,740	£5,100	£5,700	£7,140	£6,900
April	£4,740	£5,100	£5,700	£7,140	£6,900
May	£5,100	£5,400	£7,140	£7,800	£7,320
June	£5,100	£5,400	£7,140	£7,800	£7,320
July	£5,100	£5,400	£7,140	£7,800	£7,320
August	£5,100	£5,400	£7,140	£7,800	£7,320
September	£5,100	£5,400	£7,140	£7,800	£7,320
October	£4,740	£5,100	£6,600	£7,320	£6,900
November	£4,500	£4,740	£6,300	£7,140	£6,600
December	£5,100	£5,400	£7,140	£7,800	£7,320

2023 Special Dates

January - 1st and 2nd January – £10,500

April - Easter Weekend 7th to 10th April - £9,500

May - Early May Bank Holiday 29th April to 1st May - £9,000 /

Spring Bank Holiday 27th to 29th May - £9,450

August - Summer Bank Holiday 26th to 28th August – £9,000

December - 20th to 23rd December – £9,000 / 24th to 27th - 9,500 / 28th to 30th – £9,000 / 31st - £11,500

2024	Monday to Wednesday	Thursday	Friday	Saturday & Bank Holiday Sundays	Sunday
January	£4,740	£5,100	£6,300	£7,140	£6,600
February	£4,740	£5,100	£6,300	£7,140	£6,600
March	£5,100	£5,400	£6,600	£7,800	£7,140
April	£5,100	£5,400	£6,600	£7,800	£7,140
May	£5,400	£5,700	£7,200	£8,340	£7,800
June	£5,400	£5,700	£7,200	£8,340	£7,800
July	£5,400	£5,700	£7,200	£8,340	£7,800
August	£5,400	£5,700	£7,200	£8,340	£7,800
September	£5,400	£5,700	£7,200	£8,340	£7,800
October	£5,100	£5,400	£6,600	£7,800	£7,140
November	£4,740	£5,400	£6,600	£7,140	£6,900
December	£5,400	£5,700	£7,140	£7,800	£7,320

2024 Special Dates

January- 1st and 2nd January – £10,500

March/April - Easter Weekend 29th March to 1st April - £9,800

May - Early May Bank Holiday 4th to 6th May - £9,500 / Spring Bank Holiday 25th to 27th May - £9,500

August - Summer Bank Holiday 24th to 26th August – £9,800

December - 20th to 23rd December – £9,500 / 24th to 27th - 10,500 / 28th to 30th – £9,500 / 31st - £12,500

Please note* Access to the Grade II* listed Manor House is NOT included and therefore **toilet facilities are NOT available** and must be provided by a portable washroom provider. Should you wish to hire the Manor House this may be available at our discretion for a minimum fee of £4000 +vat.

Venue Hire Prices

All prices shown are
inclusive of VAT

2025	Monday to Wednesday	Thursday	Friday	Saturday & Bank Holiday Sundays	Sunday
January	£5,100	£6,300	£7,140	£7,800	£7,140
February	£5,100	£6,300	£7,140	£7,800	£7,140
March	£5,400	£6,600	£7,800	£8,340	£7,800
April	£5,400	£6,600	£7,800	£8,340	£7,800
May	£5,700	£7,200	£8,340	£8,700	£8,340
June	£5,700	£7,200	£8,340	£8,700	£8,340
July	£5,700	£7,200	£8,340	£8,700	£8,340
August	£5,700	£7,200	£8,340	£8,700	£8,340
September	£5,700	£7,200	£8,340	£8,700	£8,340
October	£5,400	£6,600	£7,800	£8,340	£7,800
November	£5,400	£6,600	£7,140	£7,800	£7,140
December	£5,700	£7,140	£7,800	£8,340	£7,800

2025 Special Dates

January- 1st and 2nd January – £10,500

April - Easter Weekend 18th April to 21st April - £9,800

May - Early May Bank Holiday 3rd to 5th May - £9,800 / Spring Bank Holiday 24th to 26th - £9,800

August - Summer Bank Holiday 23rd to 25th August – £9,800

December - 19th to 23rd December – £9,800 / 24th to 27th - 10,500 / 28th to 30th – £9,800 / 31st - £12,500



Late Availability Special Promotions

We occasionally have changes in bookings and cancellations so we may be able to offer some promotional discounts on the prices above for last minute bookings.

Please contact the Events Team for more details
info@minleymanorevents.co.uk

CATERING YOUR WAY

food is symbolic of love when words are inadequate



IMAGE CREDIT: MASHA UNWERTH

THE CHOICE IS YOURS

We are able to offer a complete catering service for those couples who prefer less to organise and be able to relax in the knowledge that everything is catered for. We have selected a number of award winning caterers to leave you feeling in control over your menu, style of food and type of service you require.



Our Caterers

You can rest assured that our handpicked award winning preferred caterers, will design your menu to suit all tastes and budgets, and provide a complete service guaranteed to impress.



IMAGE CREDIT: BERTIES PHOTOGRAPHY

THE LITTLE KITCHEN COMPANY



Little in name but big in taste, The Little Kitchen Company are award winning across the South and are our preferred partner when it comes to your catering. so if you are looking for an event caterer who is professional, friendly and creative, yet competitive in price, then these are the caterers for you.

JACARANDA CATERING



Having been in the catering and events business for over 20 years, Jacaranda still approach every new project with the same level of enthusiasm and professionalism and have built up a reputation throughout Sussex, Surrey and Hampshire for stylish, elegant events accompanied by mouth-watering menus and outstanding service

HEENAS KITCHEN



Specialising in Indian wedding catering Heenas Kitchen craft delicious, wholesome, Indian and fusion food, from the freshest ingredients and the finest quality herbs and spices, using traditional Indian family recipes.

Our Caterers

If you are looking for a luxury dining experience then we recommend these incredible and innovative catering teams to offer you exceptional food experiences and service to match



IMAGE CREDIT: PAOLA COLLEONI

BUBBLE FOOD



Bubble is known as the couture of event food design, creating visionary spectacles that engage and excite guests and delight clients. A unique experience with theatrical flair, but behind the style lies beautiful flavours and exceptional food. All of which is delivered with incomparable skill.

CREATE



One of London's leading event caterers for nearly 35 years, they are widely regarded for being reliable, consistent, trustworthy and professional by clients and venues. Nothing excites us more than knowing we have the opportunity to impress and have some fun while doing it.

KALM KITCHEN



Kalm Kitchen is known for creating outstanding food that captures people's imaginations, thoughtfully tailored and flawlessly executed. They have established a reputation for an inventive approach to food and meticulous attention to detail, pushing creative boundaries for catering across Surrey, Sussex & Hampshire



IMAGE CREDIT: ANDY MAC PHOTOGRAPHY



Catering Packages

Whilst you are welcome to choose a your own caterers with a small surcharge, our full catering packages offer couples complete peace of mind with your choice of menu, furniture, tableware and staff all provided in one package

EXAMPLE WEDDING BREAKFAST PACKAGE

Approx **£85 + VAT per guest based on 100 guests**

Welcome Drinks service and hire of reception glasses, trays and jugs

Canapes (3 per person)

Starter (plated or sharing)

Main Course (plated or sharing)

Dessert (plated or sharing)

Provision of Tea & Coffee (to table or buffet)

Service of Drinks throughout Wedding Reception

Cooling for all drinks (including those supplied by client)

Cutting and Service of Wedding Cake

Hire of tables and chairs (standard style but can be upgraded for additional cost)

Hire of all glassware, crockery and cutlery

White linen napkins

Hire of Catering tent and mobile kitchen on site (includes setup and take down)

All staffing on the day, including private chefs and wedding manager

Wedding Menu Tasting

On site pre-wedding visit and consultation

DRINKS PACKAGE

Drinks package example £25.00 + VAT per guest

2 glasses of chilled Prosecco
or sparkling elderflower during drinks reception

Half bottle of Wine served with the wedding breakfast

Provision of toast glasses, Prosecco,
pouring and serving

Example Catering Package with The Little Kitchen Company

MICRO WEDDINGS

big things often have small beginnings



INTIMATE & PERSONAL

Most aspects of a larger traditional wedding can form part of a smaller or micro wedding. Many couples feel more at ease and are able to relax on their special day knowing just a handful of loved ones are celebrating with them. Whilst fewer guests offers couples the freedom to think outside the box and the flexibility to get creative to really indulge their special people.

Micro Weddings

Becoming increasingly popular since the pandemic restrictions these mini celebrations involve smaller gatherings of close family and friends, and provides endless opportunities to be extravagant.

**Please note regardless of guest numbers the same venue hire prices apply*



THE DINING ROOM

Perfect for smaller ceremonies the Jacobean oval Dining Room with beautifully engraved curved doors, is one of our favoured rooms in the Manor House.

Seating any number from 6 to 30 guests, its many windows allow spectacular views over the South Terrace and rolling countryside. With its own reception area and access to your very own terrace for canapes and champagne.



THE SUMMERHOUSE

For a really unusual intimate, outdoor affair, our thatched Summerhouse nestled away from the Manor House in a secluded glade makes for a fairytale woodland setting for smaller ceremonies of up to 20 guests.

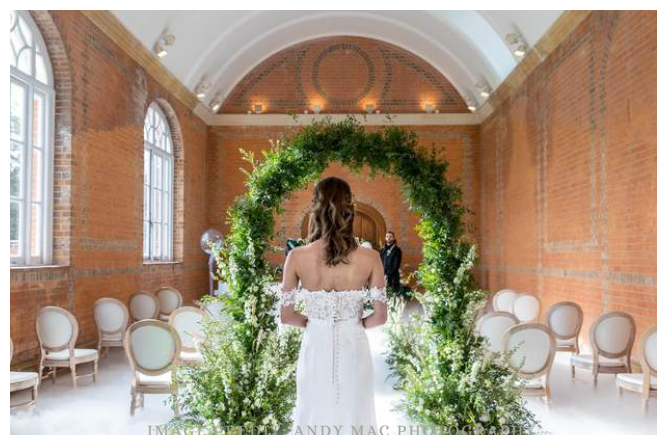
Surrounded by heather and trees, with the impressive house visible in the distance, it really is an idyllic setting reminiscent of a scene from Narnia.



THE ORANGERY

Although our largest space, the Orangery is uniquely sized for smaller celebrations, so that one end can be set up for your ceremony, should you wish to be inside, whilst your reception dining tables can be laid ready at the other end.

You enter in the middle of the building into a large central atrium with a wrought iron chandelier hangs perfect as a focal point for a beautiful floral display. The Orangery is an incredibly versatile blank canvas to create various layouts and floorplans.



ACCOMMODATION

remember tonight for it is the beginning of always



THE ELVETHAM

Fleet Rd, Hartley Wintney, Hook RG27 8AS
www.elvethamhotel.co.uk
01252 844871

THE AVIATOR BY TAG

55 Farnborough Rd, Farnborough GU14 6EL
www.aviatorhampshire.com
01252 555890

FOUR SEASONS HAMPSHIRE

Dogmersfield Park, Chalky Ln, Dogmersfield, RG27 8TD
www.fourseasons.com/hampshire
01252 853000

THE VILLAGE

Pinehurst Rd, Farnborough GU14 7BF
www.village-hotels.co.uk
01252 710675

THE LISMOYNE HOTEL

45 Church Rd, Fleet GU51 4NE
www.lismoynehotel.com
01252 628555
SPECIAL RATE BOOKING REF: Lismoyne_MM

THE CASA HOTEL

Handford Ln, Yateley GU46 6BT
www.thecasahoteluk.com
01252 873275

THE ELY

London Road, Blackwater, Camberley GU17 9LJ
www.greenekinginns.co.uk
01252 860444

PREMIER INN

7-11 Fleet Rd, Fleet GU51 3QF
www.premierinn.com
0333 321 9322



IMAGE CREDIT: ANTHONY YU

Frequently Asked Questions

&

Places To Go/Things To Do

FAQ'S

01

~ What is Dry Hire?

Dry hire refers to hiring a venue as a blank canvas or empty space as opposed to all-inclusive with catering. At Minley Manor you have the option to dry hire and design your own bespoke wedding and work with your choice of caterers, furnishings and décor. However, we can also provide you with our recommended suppliers that we have worked with before.

02

~ Can we have Exclusive use of the venue?

Yes, we only hire the Orangery and grounds exclusively to our couples, so you have complete privacy. Access to the Manor House may be arranged for an additional fee.

03

~ Are you licenced for civil ceremonies?

We cater for celebrant weddings currently, and do not hold a licence to conduct civil ceremonies as yet, but plan to have this by 2024 please check with us before booking if you require the legal element of your ceremony.

04

~ Can we have the wedding ceremony outdoors?

Absolutely! We are ideal for outside celebrations and have many areas that are perfect for ceremonies

05

~ Can we supply our own drinks and alcohol?

You are welcome to supply your own drinks and provide your own bar Alternatively, we can help with hiring either a mobile bar service or a fixed bar structure and staff. Our caterers can provide this service for you as an additional cost to any catering package.

06

~ Do you charge corkage?

No, we do not charge corkage currently.

07

~ Can we use our own caterers?

Yes, you are welcome to subject to a £500 surcharge, but we do ask you contact our preferred caterers first for their availability as our caterers are familiar with our site logistics.

08

~ From what time can we get access to set up and decorate the venue?

Hire is for 12 hours but we may be able to allow access from midday the day before providing there are no other bookings.

09

~ What time does our evening reception need to finish?

We prefer the party to finish by midnight, however, an extension to 1am is possible on request at an additional fee of £350 +VAT

10

~ Is confetti allowed?

Yes - biodegradable confetti, fresh petals and rice can be thrown

11

~ Is there accommodation on site?

No guest bedrooms are available currently in the Manor House, but we have a three bedroomed cottage sleeping 7 to hire at an additional £850+vat for two nights. If you would rather hotel accommodation there are many nearby hotels, a full list is available on request.

12

~ Can we have fireworks?

This may be possible on request at an extra charge.

PLACES TO GO & THINGS TO DO

01

Country Pub Dining

Our neighbour, The Crown & Cushion is a fabulous country pub with Bistro style dining, just a short walk from Minley Manor, via a footpath through woodland adjacent.

02

Beautiful Walks

We are lucky enough to benefit from some easily accessible countryside walks around the Minley Estate Woods and locally around Minley and Yateley Common Country Park. Historic Fleet Pond Nature Reserve is a short drive away and Virginia Water Lake is 15 miles along the A30 in Sunninghill.

03

Horse Riding

We are very happy to arrange for horse riding as an activity for you and your guests and can provide details for this on request.

04

Watersports

Originally part of the Minley Manor estate, Hawley Lake a short distance away, perfect for scenic walking trails, boating and water skiing.

05

Shopping

Just 4 miles away, Camberley is the largest town providing a fantastic shopping experience at The Atrium and The Meadows benefits from a 24 hour Tesco and Marks & Spencer's superstores.

06

Eating Out

10 minutes by car, Camberley plays host to a plethora of eateries, coffee shops, bars and restaurants to suit all tastes. The market towns of Fleet and Farnborough, both under 5 miles away provide local amenities and fast food chains.

07

Cinemas

Farnborough Vue Cinema is located within the Meads Shopping Centre, and Camberley also has a Vue Cinema and TenPin Bowling conveniently located in The Atrium.

08

Golf Courses

Less than 5 minutes from Minley Manor is Fleets prestigious North Hants Golf Club, with Hartley Wintney Golf Club just 7 minutes drive down the A30. Camberley plays hosts to both Pine Ridge and Camberley Heath Golf Clubs.

09

Childrens Activities

Trampolining at Gravity Force (Camberley 3.3 miles), Indoor Soft Play and Mini Farm at Jakes @Trilakes (Yateley 2.5 miles away) theres plenty to keep the little ones entertained.

10

Blackbushe & Farnborough Airports

For a host of aviation activities, Blackbushe Airport just 1 mile away on the A30, so if you are an aircraft enthusiast, a business jet user, or looking to learn to fly, the facilities at Blackbushe are superb. Farnborough Airport, just 8 miles away is the home of the Farnborough Airshow, and a full service private airport for passengers, crew and aircraft.

11

Theme Park Days Out

One of the major theme parks in the UK is Chertseys Thorpe Park, just 20 miles away off the M3, is a great family day out for thrill seekers. For a slower paced day out, Birdworld in Farnham is just 15 miles away, and is the UK's largest bird park, home to 1,200 birds from around the world.

12

Parks & Gardens

Savill Garden, Painshill Park and RHS Wisley offers hundreds of acres of gardens to explore in Surrey. With a huge number of National Trust properties to visit in Hampshire, Surrey and Berkshire there is plenty of historic architecture to enjoy also.



We look forward to hearing from you

